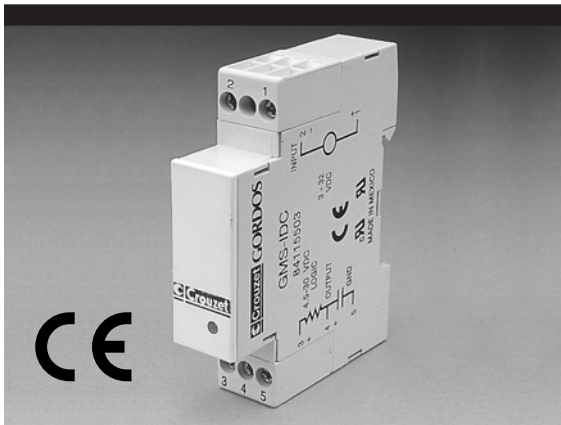


DIGITAL I/O MODULES

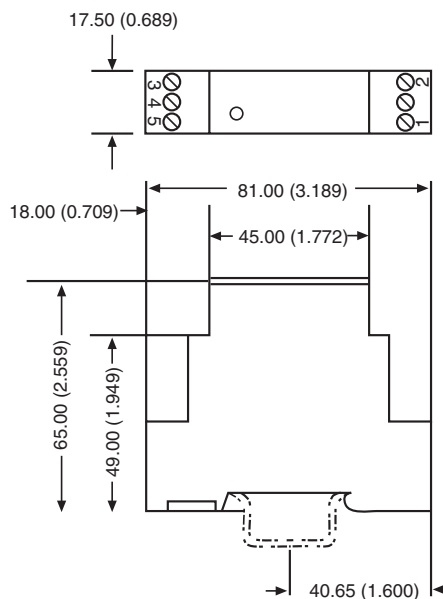
17.5mm DIN-RAIL INPUT MODULES



FEATURES:

- CE Compliant
- DIN-Rail Mountable (17.5 mm wide) Single Point Input Modules
- 4 kV Optical Isolation
- Open-Collector Output with LED Indicator
- UL and cUL (E46203) Recognized
- Regulated Supply Voltage
- Built-in LED Status Indicator

DIMENSIONS:



DIMENSIONS: MILLIMETERS (INCHES)
TOLERANCE: ±0.020 (±0.50)

INPUT SPECIFICATIONS: (1)

Model Number	84115501	84115502	84115503
--------------	----------	----------	----------

Parameter

Nominal Voltage	120 VAC/DC	240 VAC/DC	4-32 VDC
Maximum Voltage	140 VAC/DC	280 VAC/DC	32 VDC
Minimum Voltage	90 VAC/DC	180 VAC/DC	4 VDC
Minimum Current (2)	7 mA	2 mA	27 mA
Maximum Current (2)	14 mA	5 mA	35 mA
Drop-out Current (3)	3 mA	1 mA	1 mA
Allowable Current (4)	2.5 mA	0.7 mA	1 mA
Voltage for No Output (4)	50 VAC/DC	50 VAC/DC	2.2 VDC
Maximum Turn-on Time (5)	20 mS	20 mS	5 mS
Maximum Turn-off Time (5)	20 mS	20 mS	10 mS

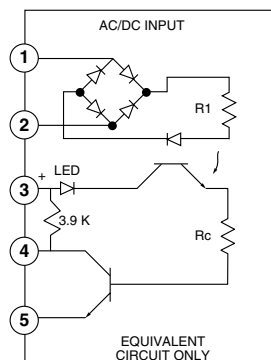
OUTPUT SPECIFICATIONS: (1)

Model Number	84115501	84115502	84115503
--------------	----------	----------	----------

Logic Supply Voltage	4.5 to 30 VDC
Maximum Logic Supply Voltage	30 VDC
Minimum Logic Supply Voltage	4.5 VDC
Maximum Logic Supply Current (6)	32 mA
Maximum Supply Idle Current (6)	7 mA
Maximum Current (7)	50 mA
Maximum Logic Leakage Current (8)	10 µA
Maximum Output Voltage Drop (9)	0.2 VDC

GENERAL SPECIFICATIONS: (1)

Operating Temperature Range	-30° to +80°C
Storage Temperature Range	-40° to +100°C
Input to Output Isolation Voltage (10)	4000 VAC



Notes:

- (1) *te condition to off-state condition, TA=25 C. Higher currents may result in the output remaining in the "on" state.*
- (4) *Defined as the maximum current/voltage allowed through the module's input that will not switch the module's output state from "off" to "on."*
- (5) *At 15 VDC logic, 30 VDC output, 50 mA, 25 C and nominal input voltage.*
- (6) *At maximum logic supply voltage and 25 C.*
- (7) *Maximum allowable sinking current through open collector output transistor.*
- (8) *For off state condition excluding 3.9 K Ohm pull up resistor*
- (9) *At 50 mA, TA = 25C*
- (10) *At 25 C for 1 second maximum duration.*

Products and specifications subject to change without notice.
Consult factory for application assistance.